

Resin Crowns

A resin crown restoration

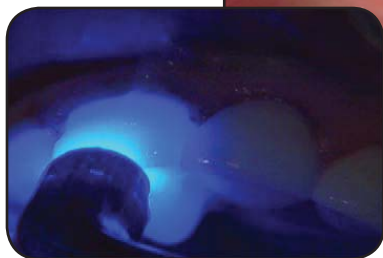
When a tooth needs a restoration or you want to improve your smile, sometimes the best choice is a resin crown. A resin crown is made of a mixture of microscopic glass-like particles and plastic resin that is cured for strength.

A resin crown is precision-crafted in a dental laboratory, so it may take two or more appointments to restore your tooth with a resin crown.



Resin crown on model

Temporary crown



Using a curing light to bond crown to prepared tooth



Placing resin crown over prepared tooth

Placing a resin crown

On your first visit, we numb the area to make you comfortable. We may also use a rubber dam to protect your mouth and the back of your throat while we work.

Using the handpiece, we remove any decay and shape the tooth, so it will securely hold the crown. Next we take an impression of your teeth. The dental lab uses this impression to make an accurate model of your mouth; then they use the model to create a crown that precisely fits your tooth and bite. In the meantime, we often place a temporary crown to protect your tooth.

On your next visit, we remove the temporary crown and try in your new resin crown. We check the fit, and when everything looks good, we bond the crown in place.

The benefits of a resin crown

A resin crown has several benefits. Like all crowns, it covers and protects your tooth. But in addition, a resin crown is

- ❖ made of a material that expands and contracts like natural tooth structure.
- ❖ gentle on the opposing teeth when you chew.
- ❖ natural looking because it can be made to closely match or improve your own tooth color.